

Financial Review Of Capital Expenditures & Pumpage through October 31, 2018

As of November 9, 2018

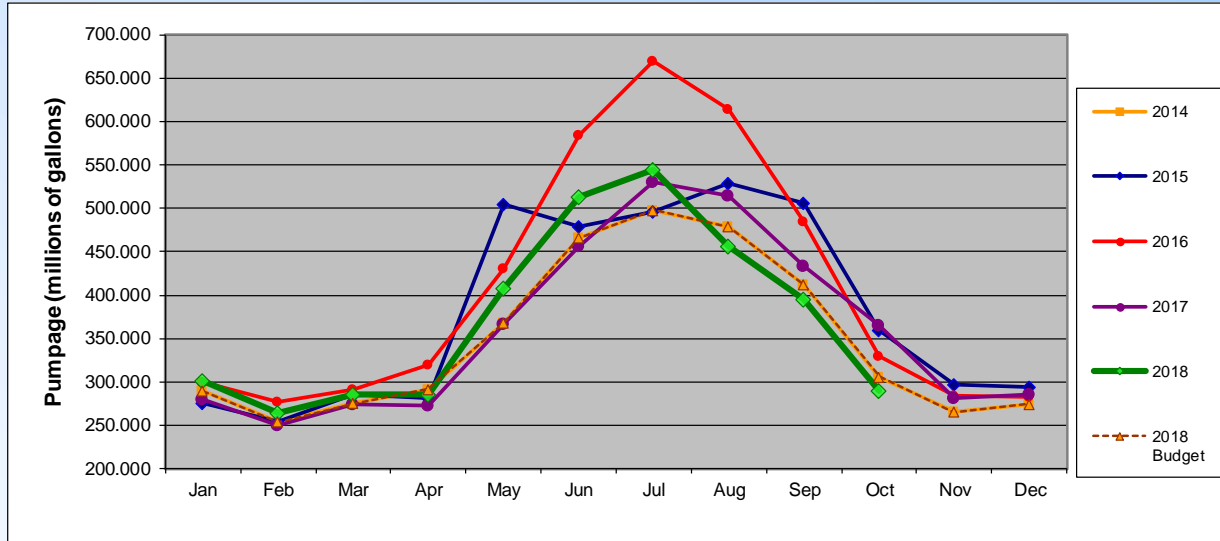
**Pennichuck Corporation
Capital Expenditures - Summary**

10/31/2018
(\$000's)

<u>QTD</u>				<u>YTD</u>		
<u>Prior</u>	<u>Actual</u>	<u>Budget</u>		<u>Prior</u>	<u>Actual</u>	<u>Budget</u>
\$ 2,504	\$ 944	\$ 667	PWW	\$ 6,649	\$ 4,444	\$ 9,769
437	315	381	PEU	1,249	3,729	4,533
10	7	1	PAC	62	21	135
-	-	-	PWSC	-	-	800
-	-	-	Southwood Corp.	-	-	-
-	-	-	Holding Company	-	-	-
<u>\$ 2,951</u>	<u>\$ 1,266</u>	<u>\$ 1,049</u>	Subtotal	<u>\$ 7,960</u>	<u>\$ 8,194</u>	<u>\$ 15,237</u>
-	45	-	AFUDC	-	61	-
3,128	133		CIAC	8,129	1,444	-
<u>\$ 6,079</u>	<u>\$ 1,444</u>	<u>\$ 1,049</u>	Total	<u>\$ 16,089</u>	<u>\$ 9,699</u>	<u>\$ 15,237</u>

**Pennichuck Corporation
PWW Pumpage**

10/31/2018
(\$000's)



Pumpage Data (millions of gallons)													
	Jan	Feb	Mar	Apr	May	Jun	Jul	Aug	Sep	Oct	Nov	Dec	Totals
2014	289.730	253.750	275.460	291.780	367.720	465.900	497.640	478.960	411.680	305.600	265.030	274.390	4,177.640
2015	274.890	253.900	285.910	281.040	504.440	478.850	496.730	529.140	506.020	359.060	297.530	294.560	4,562.070
2016	300.130	277.350	291.250	319.540	430.760	584.950	670.110	614.830	484.920	329.410	284.400	282.010	4,869.660
2017	279.330	249.500	274.680	273.160	366.790	455.660	529.650	514.210	432.840	364.900	281.650	285.860	4,308.230
2018	300.940	263.970	284.930	285.380	407.240	512.830	544.480	455.820	395.690	289.960			3,741.240

Pumpage Data - Budget (millions of gallons)													
	Jan	Feb	Mar	Apr	May	Jun	Jul	Aug	Sep	Oct	Nov	Dec	Totals
2018 Budget	289.730	253.750	275.460	291.780	367.720	465.900	497.640	478.960	411.680	305.600	265.030	274.390	4,177.640