

**Financial Review
Of Capital Expenditures & Pumpage
&
through November 30, 2017
As of December 8, 2017**

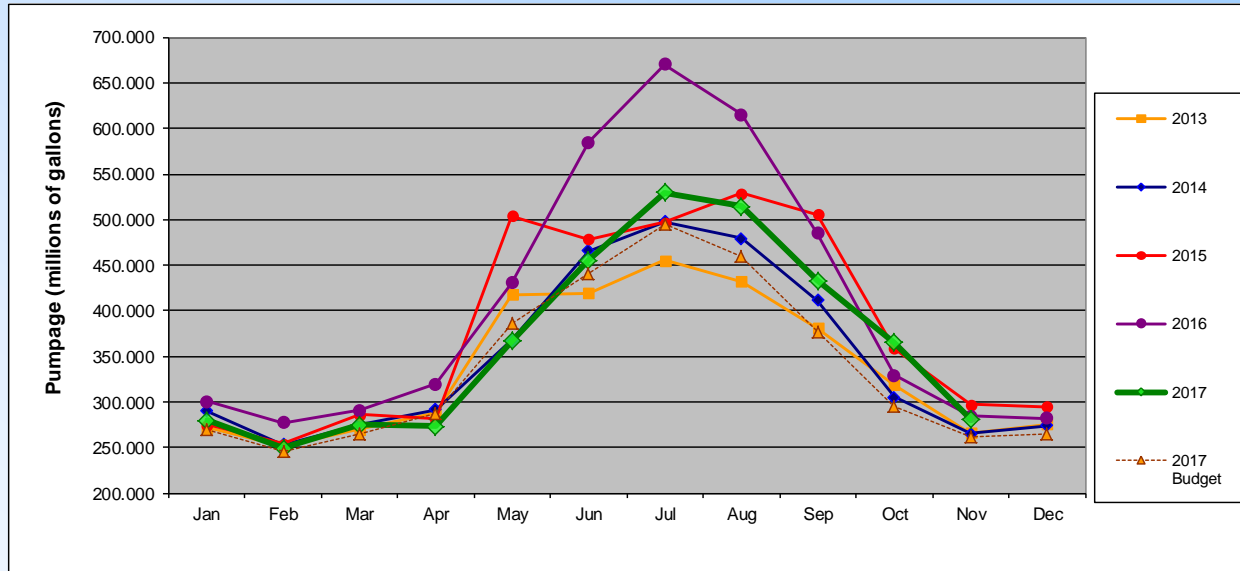
**Pennichuck Corporation
Capital Expenditures - Summary**

11/30/2017
(\$000's)

<u>QTD</u>				<u>YTD</u>		
<u>Prior</u>	<u>Actual</u>	<u>Budget</u>		<u>Prior</u>	<u>Actual</u>	<u>Budget</u>
\$ 4,602	\$ 1,366	\$ 1,334	PWW	\$ 15,434	\$ 5,511	\$ 9,987
3,383	369	703	PEU	5,145	1,181	5,240
118	4	11	PAC	198	56	130
-	-	-	PWSC	-	-	800
-	-	-	Southwood Corp.	-	-	-
-	-	-	 Holding Company	-	-	-
<u>\$ 8,103</u>	<u>\$ 1,739</u>	<u>\$ 2,048</u>	Subtotal	<u>\$ 20,777</u>	<u>\$ 6,748</u>	<u>\$ 16,157</u>
42	-	-	AFUDC	260	-	-
2,296	60		CIAC	3,367	5,061	-
<u>\$ 10,441</u>	<u>\$ 1,799</u>	<u>\$ 2,048</u>	Total	<u>\$ 24,404</u>	<u>\$ 11,809</u>	<u>\$ 16,157</u>

Pennichuck Corporation
PWW Pumpage

11/30/2017
(\$000's)



Pumpage Data (millions of gallons)													
	Jan	Feb	Mar	Apr	May	Jun	Jul	Aug	Sep	Oct	Nov	Dec	Totals
2013	271.598	251.530	270.310	287.902	417.950	419.280	455.300	432.310	381.320	318.700	265.880	275.370	4,047.450
2014	289.730	253.750	275.460	291.780	367.720	465.900	497.640	478.960	411.680	305.600	265.030	274.390	4,177.640
2015	274.890	253.900	285.910	281.040	504.440	478.850	496.730	529.140	506.020	359.060	297.530	294.560	4,562.070
2016	300.130	277.350	291.250	319.540	430.760	584.950	670.110	614.830	484.920	329.410	284.400	282.010	4,869.660
2017	279.330	249.500	274.680	273.160	366.790	455.660	529.650	514.210	432.840	364.900	281.650		4,022.370

Pumpage Data - Budget (millions of gallons)													
	Jan	Feb	Mar	Apr	May	Jun	Jul	Aug	Sep	Oct	Nov	Dec	Totals
2017 Budget	269.255	246.203	264.976	286.678	386.822	440.318	495.238	458.976	376.559	295.958	261.560	265.590	4,048.133